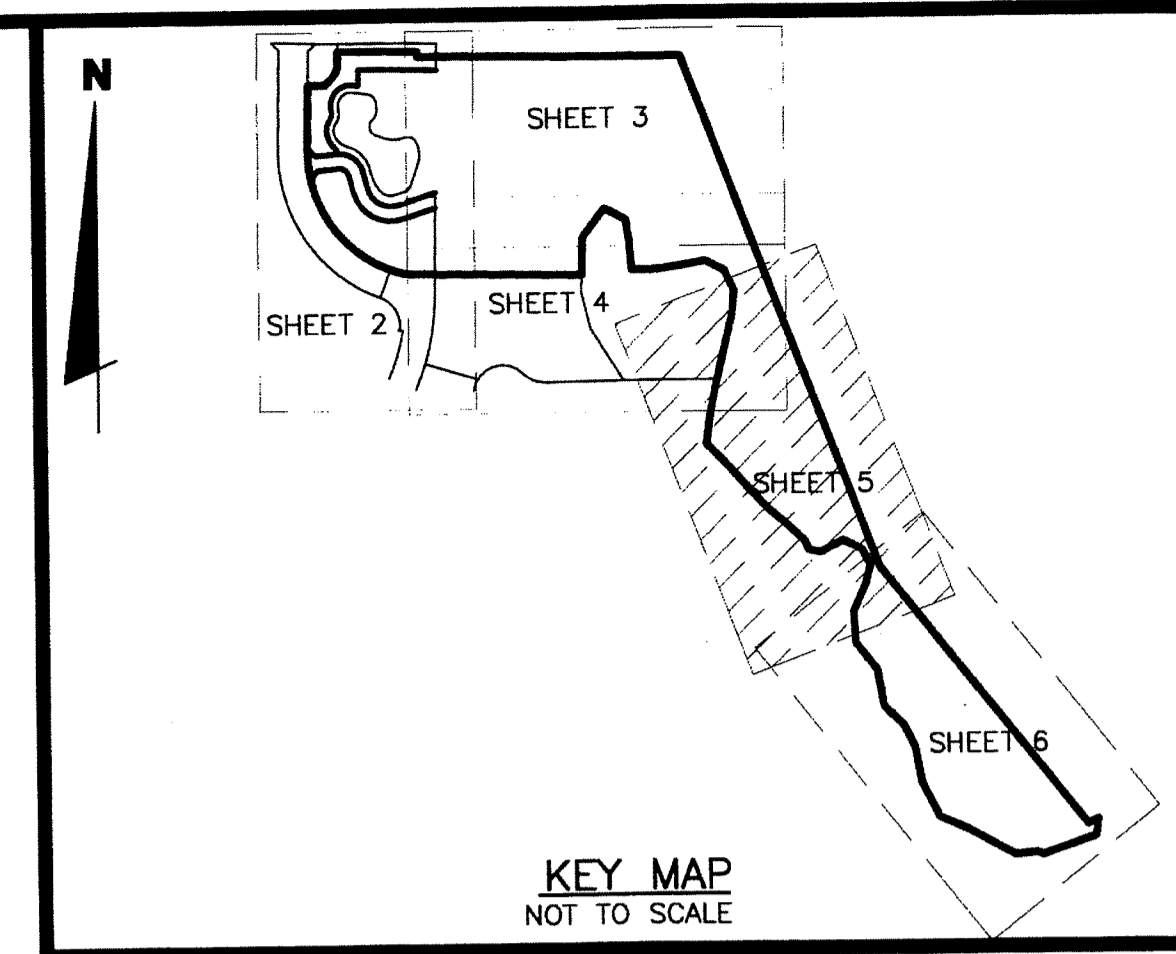
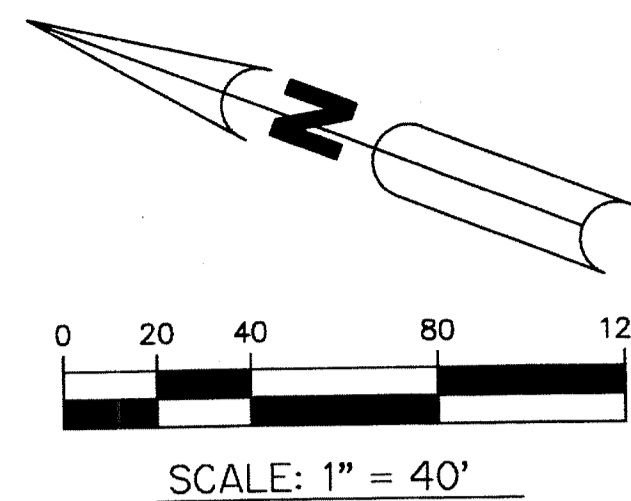


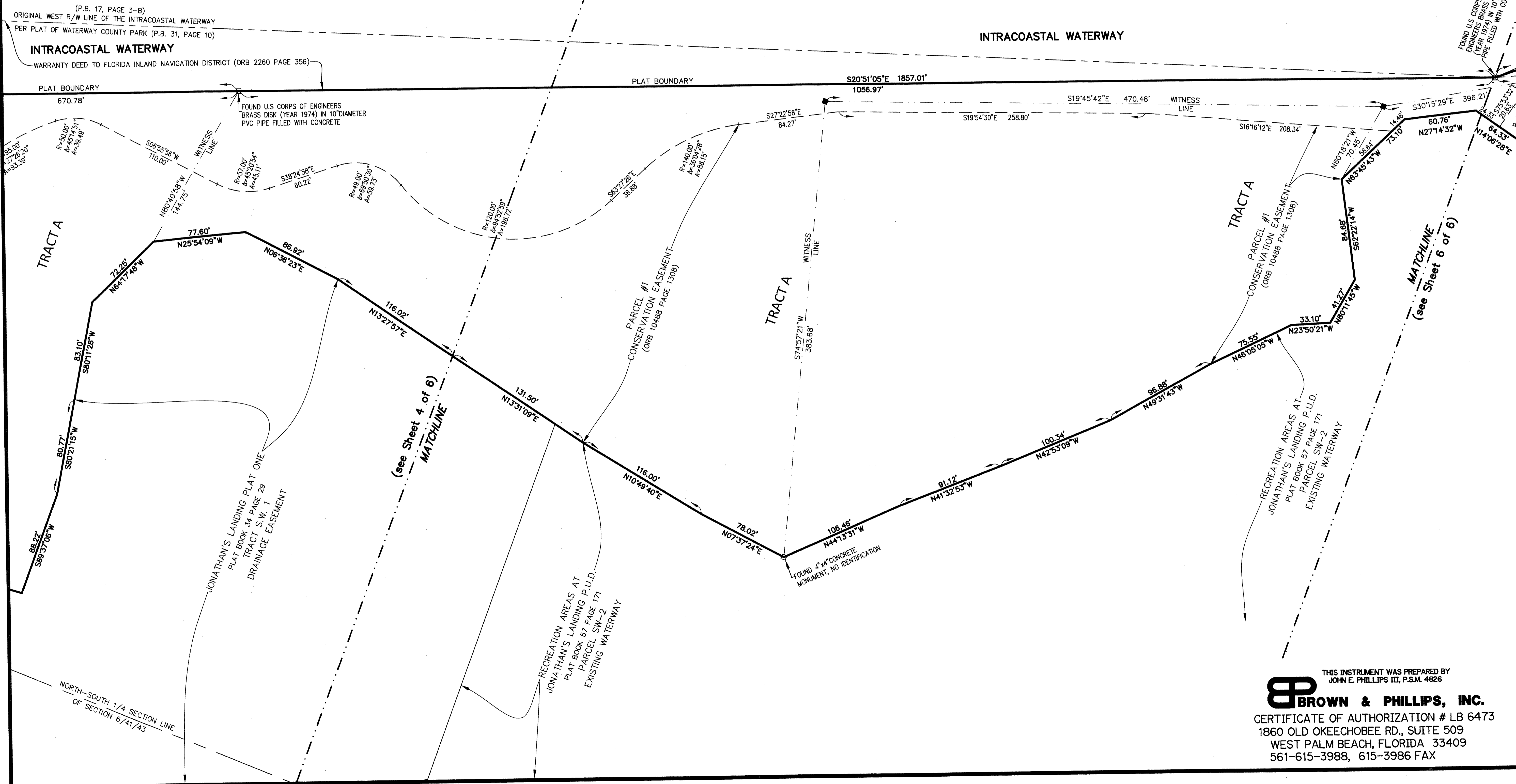
1000-933
WATERWAY PARK, A PORTION OF JONATHAN'S LANDING P.U.D.

LYING IN SECTIONS 6 AND 7, TOWNSHIP 41 SOUTH, RANGE 43 EAST,
 PALM BEACH COUNTY, FLORIDA, BEING A REPLAT OF ALL OF
 WATERWAY COUNTY PARK, RECORDED IN PLAT BOOK 31, PAGE 10,
 AND THE CIVIC CENTER AND PRIVATE BUFFER PARCELS OF
 JONATHAN'S LANDING PLAT SIX, RECORDED IN PLAT BOOK 47, PAGE 10,
 OF THE PUBLIC RECORDS OF PALM BEACH COUNTY, FLORIDA

SHEET 5 OF 6



201



THIS INSTRUMENT WAS PREPARED BY
 JOHN E. PHILLIPS III, P.S.M. 4826
BROWN & PHILLIPS, INC.
 CERTIFICATE OF AUTHORIZATION # LB 6473
 1860 OLD OKEECHOBEE RD., SUITE 509
 WEST PALM BEACH, FLORIDA 33409
 561-615-3988, 615-3986 FAX